

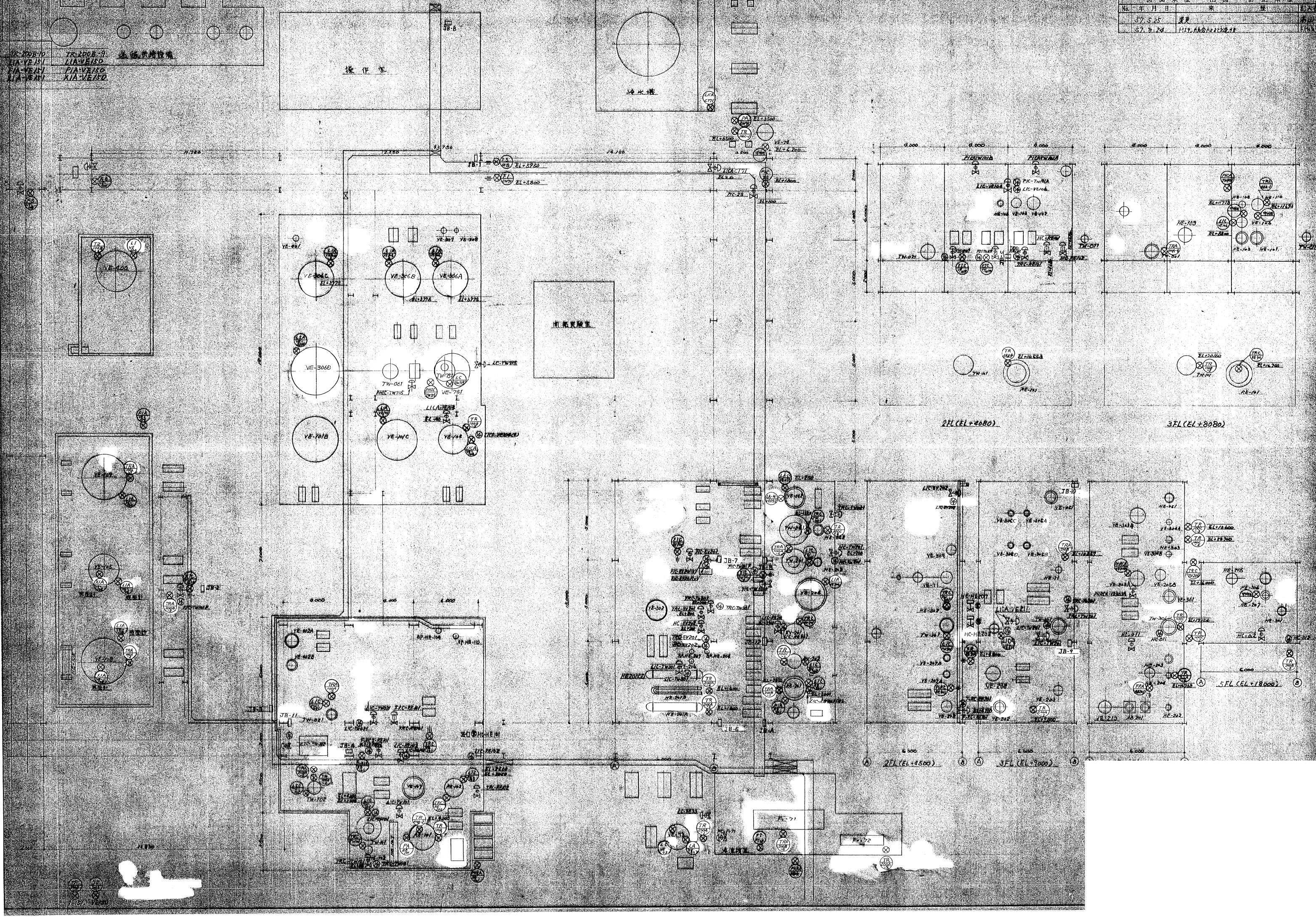
No.	年月日	米	出	入
57.5.25	度更			
57.8.24	11月, 11月, 11月			

TK-100B-10
TK-100B-9
TK-100B-8
TK-100B-7
TK-100B-6
TK-100B-5
TK-100B-4
TK-100B-3
TK-100B-2
TK-100B-1

操作室

海水塔

南東實驗室



2FL (EL+4080)

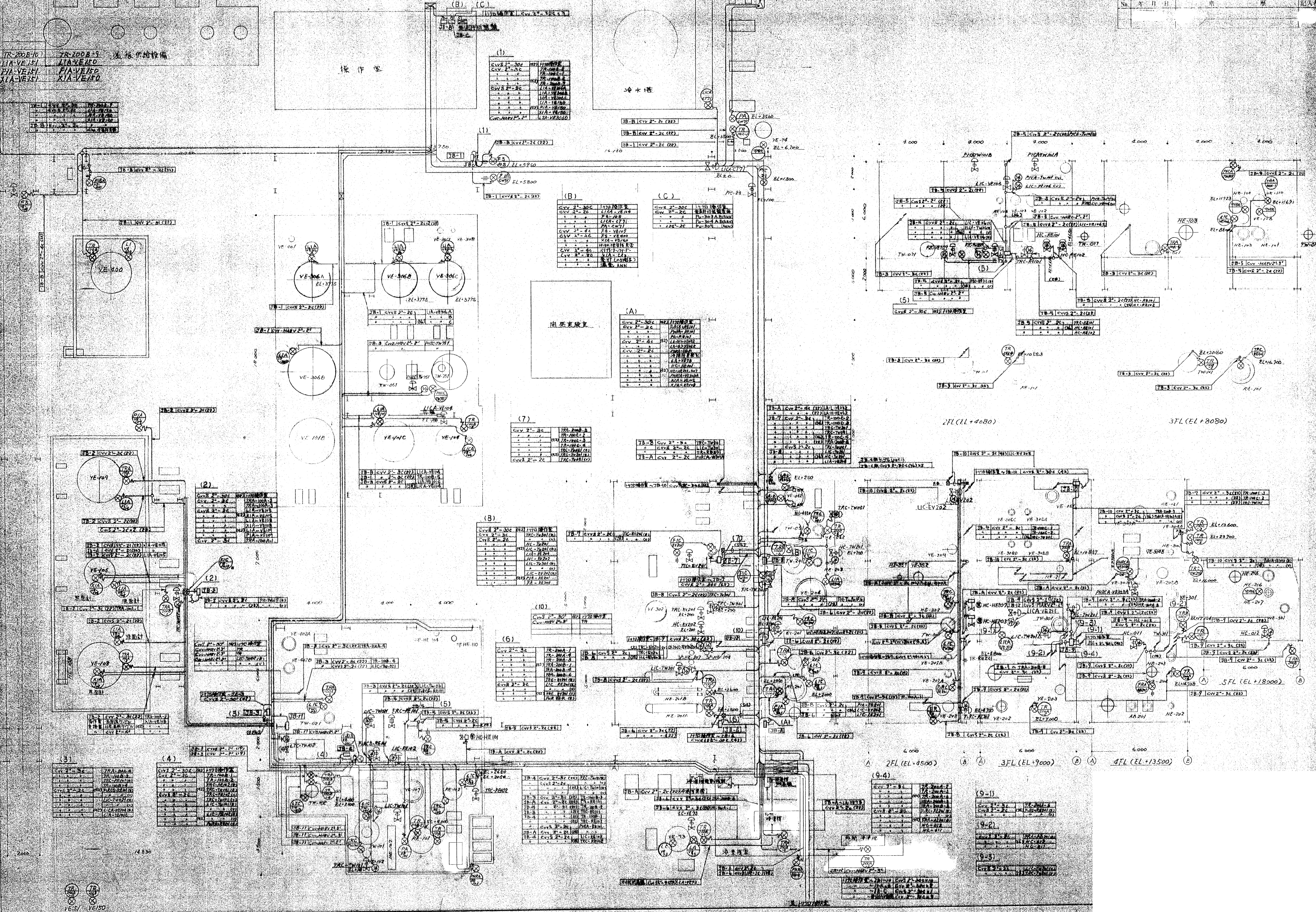
3FL (EL+3080)

2FL (EL+4500)

3FL (EL+3000)

5FL (EL+18000)

TR-200B-10	TR-200B-9	儀器架給設備
LIA-VE151	LIA-VE150	
PIA-VE151	PIA-VE150	
XIA-VE151	XIA-VE150	



(b)

ENV 8 2-30C	(12)	11700000
CVY 2-30C		7A-1000-4
		PA-1000-1
		7A-1000-2
		7A-1000-3
	(11)	7A-1000-4
ENV 8 2-30C		1/A-VF5000
		1/A-VF5000
		1/A-VF5000
		1/A-VF5000
		1/A-VF5000
	(12)	1/A-VF5000
		1/A-VF5000
		1/A-VF5000
		1/A-VF5000
		1/A-VF5000
ENV 8 2-30C		1/A-VF5000

(B)	
GVV 2 ^o -30C	L702-PAK18
GVV 2 ^o -2C	LICA-1E14
• • •	FS-1B5
• • •	LICA-2771
• 1 •	PA-CW71
GVV 2 ^o -4C	FS-V2109
GVV 2 ^o -2C	FS-V2400
• • •	X1A-V240
• • •	1100-2000 1000
GVV 2 ^o -4C	X1T1-715F
Cyv 2 ^o -4C	X1A-L24
• • •	NT(NT100F)
• • •	1000 ANN

(A)		
CVV 2 ^o - 30c	(32)	CVV 2 ^o - 30c
CVV 2 ^o - 2c		CVV 2 ^o - 2c
CVV 2 ^o - 4c		CVV 2 ^o - 4c
CVV 2 ^o - 6c		CVV 2 ^o - 6c
CVV 2 ^o - 8c		CVV 2 ^o - 8c
CVV 2 ^o - 10c		CVV 2 ^o - 10c
CVV 2 ^o - 12c		CVV 2 ^o - 12c
CVV 2 ^o - 14c		CVV 2 ^o - 14c
CVV 2 ^o - 16c		CVV 2 ^o - 16c
CVV 2 ^o - 18c		CVV 2 ^o - 18c
CVV 2 ^o - 20c		CVV 2 ^o - 20c
CVV 2 ^o - 22c		CVV 2 ^o - 22c
CVV 2 ^o - 24c		CVV 2 ^o - 24c
CVV 2 ^o - 26c		CVV 2 ^o - 26c
CVV 2 ^o - 28c		CVV 2 ^o - 28c
CVV 2 ^o - 30c		CVV 2 ^o - 30c
CVV 2 ^o - 32c		CVV 2 ^o - 32c
CVV 2 ^o - 34c		CVV 2 ^o - 34c
CVV 2 ^o - 36c		CVV 2 ^o - 36c
CVV 2 ^o - 38c		CVV 2 ^o - 38c
CVV 2 ^o - 40c		CVV 2 ^o - 40c
CVV 2 ^o - 42c		CVV 2 ^o - 42c
CVV 2 ^o - 44c		CVV 2 ^o - 44c
CVV 2 ^o - 46c		CVV 2 ^o - 46c
CVV 2 ^o - 48c		CVV 2 ^o - 48c
CVV 2 ^o - 50c		CVV 2 ^o - 50c
CVV 2 ^o - 52c		CVV 2 ^o - 52c
CVV 2 ^o - 54c		CVV 2 ^o - 54c
CVV 2 ^o - 56c		CVV 2 ^o - 56c
CVV 2 ^o - 58c		CVV 2 ^o - 58c
CVV 2 ^o - 60c		CVV 2 ^o - 60c
CVV 2 ^o - 62c		CVV 2 ^o - 62c
CVV 2 ^o - 64c		CVV 2 ^o - 64c
CVV 2 ^o - 66c		CVV 2 ^o - 66c
CVV 2 ^o - 68c		CVV 2 ^o - 68c
CVV 2 ^o - 70c		CVV 2 ^o - 70c
CVV 2 ^o - 72c		CVV 2 ^o - 72c
CVV 2 ^o - 74c		CVV 2 ^o - 74c
CVV 2 ^o - 76c		CVV 2 ^o - 76c
CVV 2 ^o - 78c		CVV 2 ^o - 78c
CVV 2 ^o - 80c		CVV 2 ^o - 80c
CVV 2 ^o - 82c		CVV 2 ^o - 82c
CVV 2 ^o - 84c		CVV 2 ^o - 84c
CVV 2 ^o - 86c		CVV 2 ^o - 86c
CVV 2 ^o - 88c		CVV 2 ^o - 88c
CVV 2 ^o - 90c		CVV 2 ^o - 90c
CVV 2 ^o - 92c		CVV 2 ^o - 92c
CVV 2 ^o - 94c		CVV 2 ^o - 94c
CVV 2 ^o - 96c		CVV 2 ^o - 96c
CVV 2 ^o - 98c		CVV 2 ^o - 98c
CVV 2 ^o - 100c		CVV 2 ^o - 100c

(7)	
Cvy 2'-3c	TR4-2000-5
" " "	TR-100C-2
" " "	(42) TR-100C-3
" " "	TR-100C-4
" " "	TRC-TR05 (C)
" " "	(42) TRC-TR05 (B)
Cvy 2'-2c	TRC-TR05 (C)

JB-B	Cuv Z ⁺ -3c	TRC-T
"	CuvB Z ⁺ -2c	LIG-T
"	" " "	ER-B
JB-A	Cuv Z ⁺ -2c	PHRA-

JB-A	CW 2-4	(22)	IA-1-YES
		(22)	IA-H-YES
JB-7	CW 2-8		TR-1000
		(14)	TR-1000
			TRG-TW
			TRG-TW
		(14)	TR-1000
		(14)	TR-1000
	CW 2-2		TRG-TW
			TRG-TW
JB-8			HS-1000
		(14)	HS-1000
			IA-1-YES

(8)	
CvV 8 ² = 30c	(42) 1770 操作表
CvV 2 ² = 3c	T/C - T/301 (C)
CvP 8 ² = 28	c = c (C)
* * *	H - T/201
* * *	(42) L/C - T/301 (C)
* * *	L/A - P/201
* * *	H - B/201
* * *	L/C - T/301 (C)
* * *	L/A - P/201 (C)
* * *	(42) L/C - EV/202 (C)
* * *	P/A - RE/201
* * *	F/B - RE/201

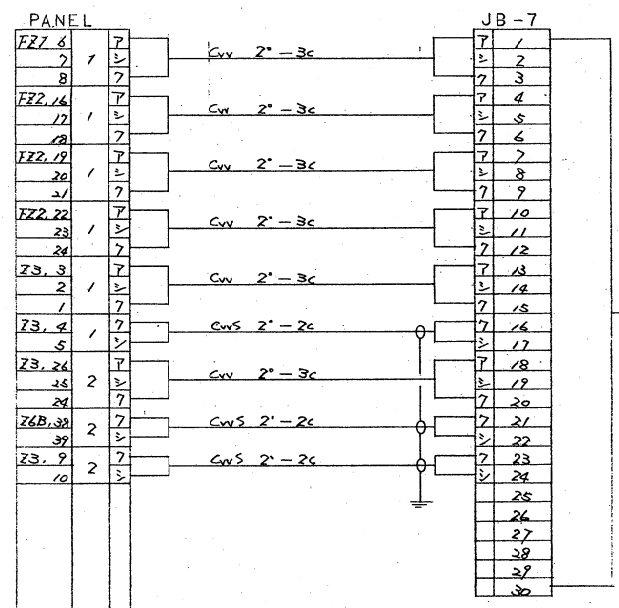
(6)	
<div> <div>Cvv 2⁺ - 3c</div> <div> <div>a</div> <div>b</div> <div>c</div> <div>d</div> <div>e</div> <div>f</div> <div>g</div> <div>h</div> <div>i</div> <div>j</div> <div>k</div> <div>l</div> <div>m</div> <div>n</div> <div>o</div> <div>p</div> <div>q</div> <div>r</div> <div>s</div> <div>t</div> <div>u</div> <div>v</div> <div>w</div> <div>x</div> <div>y</div> <div>z</div> </div> </div>	<div> <div>7R-200A-1</div> <div>7R-200A-4</div> <div>7R-200A-5</div> <div>7RA-200A-1</div> <div>7RA-200A-15</div> <div>7RA-200A-6</div> <div>7RG-200M (G2)</div> <div>7LC-200M (G2)</div> <div>7LC-200M (G2)</div> <div>7LR-200M (G2)</div> <div>7LR-200M (G2)</div> </div>

IB-1	Cwy 2'-8r (cc)	7X-10m
	CyS 2'-8r	(cc) 10-15
		(cc) 10-15
IB-2	Cwy 2'-8r (cc)	7X-10m
IB-3	Cwy 2'-8r	10-15
IB-4	Cwy 2'-8r (cc)	7X-10m
IB-5	Cwy 2'-8r	10-15
IB-6	Cwy 2'-8r	10-15
IB-7	Cwy 2'-8r	10-15
IB-8	Cwy 2'-8r	10-15
IB-9	Cwy 2'-8r	10-15
IB-10	Cwy 2'-8r	10-15
IB-11	Cwy 2'-8r	10-15
IB-12	Cwy 2'-8r	10-15
IB-13	Cwy 2'-8r	10-15
IB-14	Cwy 2'-8r	10-15
IB-15	Cwy 2'-8r	10-15
IB-16	Cwy 2'-8r	10-15
IB-17	Cwy 2'-8r	10-15
IB-18	Cwy 2'-8r	10-15
IB-19	Cwy 2'-8r	10-15
IB-20	Cwy 2'-8r	10-15
IB-21	Cwy 2'-8r	10-15
IB-22	Cwy 2'-8r	10-15
IB-23	Cwy 2'-8r	10-15
IB-24	Cwy 2'-8r	10-15
IB-25	Cwy 2'-8r	10-15
IB-26	Cwy 2'-8r	10-15
IB-27	Cwy 2'-8r	10-15
IB-28	Cwy 2'-8r	10-15
IB-29	Cwy 2'-8r	10-15
IB-30	Cwy 2'-8r	10-15
IB-31	Cwy 2'-8r	10-15
IB-32	Cwy 2'-8r	10-15
IB-33	Cwy 2'-8r	10-15
IB-34	Cwy 2'-8r	10-15
IB-35	Cwy 2'-8r	10-15
IB-36	Cwy 2'-8r	10-15
IB-37	Cwy 2'-8r	10-15
IB-38	Cwy 2'-8r	10-15
IB-39	Cwy 2'-8r	10-15
IB-40	Cwy 2'-8r	10-15
IB-41	Cwy 2'-8r	10-15
IB-42	Cwy 2'-8r	10-15
IB-43	Cwy 2'-8r	10-15
IB-44	Cwy 2'-8r	10-15
IB-45	Cwy 2'-8r	10-15
IB-46	Cwy 2'-8r	10-15
IB-47	Cwy 2'-8r	10-15
IB-48	Cwy 2'-8r	10-15
IB-49	Cwy 2'-8r	10-15
IB-50	Cwy 2'-8r	10-15
IB-51	Cwy 2'-8r	10-15
IB-52	Cwy 2'-8r	10-15
IB-53	Cwy 2'-8r	10-15
IB-54	Cwy 2'-8r	10-15
IB-55	Cwy 2'-8r	10-15
IB-56	Cwy 2'-8r	10-15
IB-57	Cwy 2'-8r	10-15
IB-58	Cwy 2'-8r	10-15
IB-59	Cwy 2'-8r	10-15
IB-60	Cwy 2'-8r	10-15
IB-61	Cwy 2'-8r	10-15
IB-62	Cwy 2'-8r	10-15
IB-63	Cwy 2'-8r	10-15
IB-64	Cwy 2'-8r	10-15
IB-65	Cwy 2'-8r	10-15
IB-66	Cwy 2'-8r	10-15
IB-67	Cwy 2'-8r	10-15
IB-68	Cwy 2'-8r	10-15
IB-69	Cwy 2'-8r	10-15
IB-70	Cwy 2'-8r	10-15
IB-71	Cwy 2'-8r	10-15
IB-72	Cwy 2'-8r	10-15
IB-73	Cwy 2'-8r	10-15
IB-74	Cwy 2'-8r	10-15
IB-75	Cwy 2'-8r	10-15
IB-76	Cwy 2'-8r	10-15
IB-77	Cwy 2'-8r	10-15
IB-78	Cwy 2'-8r	10-15
IB-79	Cwy 2'-8r	10-15
IB-80	Cwy 2'-8r	10-15
IB-81	Cwy 2'-8r	10-15
IB-82	Cwy 2'-8r	10-15
IB-83	Cwy 2'-8r	10-15
IB-84	Cwy 2'-8r	10-15
IB-85	Cwy 2'-8r	10-15
IB-86	Cwy 2'-8r	10-15
IB-87	Cwy 2'-8r	10-15
IB-88	Cwy 2'-8r	10-15
IB-89	Cwy 2'-8r	10-15
IB-90	Cwy 2'-8r	10-15
IB-91	Cwy 2'-8r	10-15
IB-92	Cwy 2'-8r	10-15
IB-93	Cwy 2'-8r	10-15
IB-94	Cwy 2'-8r	10-15
IB-95	Cwy 2'-8r	10-15
IB-96	Cwy 2'-8r	10-15
IB-97	Cwy 2'-8r	10-15
IB-98	Cwy 2'-8r	10-15
IB-99	Cwy 2'-8r	10-15
IB-100	Cwy 2'-8r	10-15

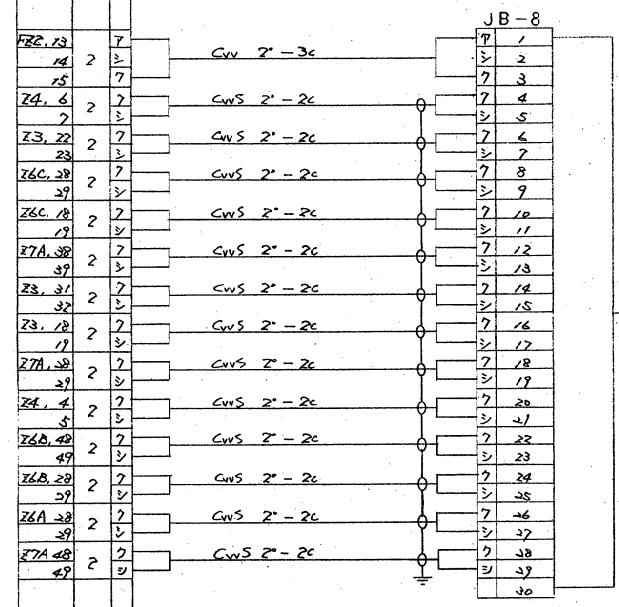
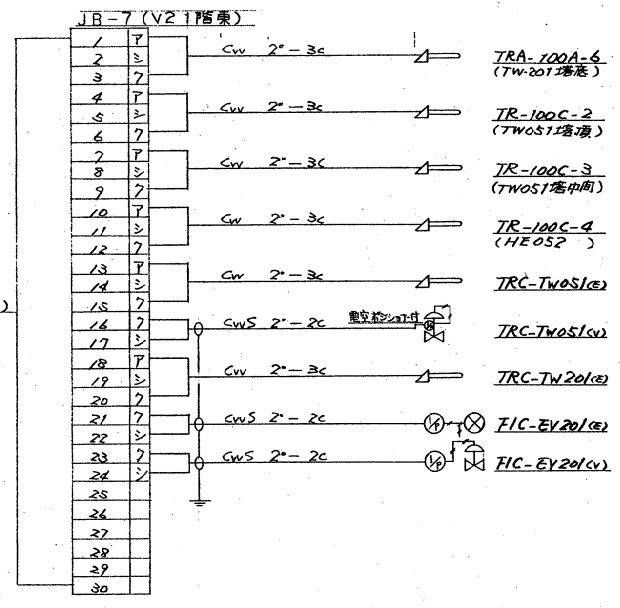
(9.4)

GVV 1 - 0.1	7.7 - 200 A - 1
2 - 0.1	7.7 - 200 A - 2
3 - 0.1	7.7 - 200 A - 3
4 - 0.1	7.7 - 200 A - 4
5 - 0.1	7.7 - 200 A - 5
6 - 0.1	7.7 - 200 A - 6
7 - 0.1	7.7 - 200 A - 7
8 - 0.1	7.7 - 200 A - 8
9 - 0.1	7.7 - 200 A - 9
10 - 0.1	7.7 - 200 A - 10
11 - 0.1	7.7 - 200 A - 11
12 - 0.1	7.7 - 200 A - 12
13 - 0.1	7.7 - 200 A - 13
14 - 0.1	7.7 - 200 A - 14
15 - 0.1	7.7 - 200 A - 15
16 - 0.1	7.7 - 200 A - 16
17 - 0.1	7.7 - 200 A - 17
18 - 0.1	7.7 - 200 A - 18
19 - 0.1	7.7 - 200 A - 19
20 - 0.1	7.7 - 200 A - 20
21 - 0.1	7.7 - 200 A - 21
22 - 0.1	7.7 - 200 A - 22
23 - 0.1	7.7 - 200 A - 23
24 - 0.1	7.7 - 200 A - 24
25 - 0.1	7.7 - 200 A - 25
26 - 0.1	7.7 - 200 A - 26
27 - 0.1	7.7 - 200 A - 27
28 - 0.1	7.7 - 200 A - 28
29 - 0.1	7.7 - 200 A - 29
30 - 0.1	7.7 - 200 A - 30
31 - 0.1	7.7 - 200 A - 31
32 - 0.1	7.7 - 200 A - 32
33 - 0.1	7.7 - 200 A - 33
34 - 0.1	7.7 - 200 A - 34
35 - 0.1	7.7 - 200 A - 35
36 - 0.1	7.7 - 200 A - 36
37 - 0.1	7.7 - 200 A - 37
38 - 0.1	7.7 - 200 A - 38
39 - 0.1	7.7 - 200 A - 39
40 - 0.1	7.7 - 200 A - 40
41 - 0.1	7.7 - 200 A - 41
42 - 0.1	7.7 - 200 A - 42
43 - 0.1	7.7 - 200 A - 43
44 - 0.1	7.7 - 200 A - 44
45 - 0.1	7.7 - 200 A - 45
46 - 0.1	7.7 - 200 A - 46
47 - 0.1	7.7 - 200 A - 47
48 - 0.1	7.7 - 200 A - 48
49 - 0.1	7.7 - 200 A - 49
50 - 0.1	7.7 - 200 A - 50
51 - 0.1	7.7 - 200 A - 51
52 - 0.1	7.7 - 200 A - 52
53 - 0.1	7.7 - 200 A - 53
54 - 0.1	7.7 - 200 A - 54
55 - 0.1	7.7 - 200 A - 55
56 - 0.1	7.7 - 200 A - 56
57 - 0.1	7.7 - 200 A - 57
58 - 0.1	7.7 - 200 A - 58
59 - 0.1	7.7 - 200 A - 59
60 - 0.1	7.7 - 200 A - 60
61 - 0.1	7.7 - 200 A - 61
62 - 0.1	7.7 - 200 A - 62
63 - 0.1	7.7 - 200 A - 63
64 - 0.1	7.7 - 200 A - 64
65 - 0.1	7.7 - 200 A - 65
66 - 0.1	7.7 - 200 A - 66
67 - 0.1	7.7 - 200 A - 67
68 - 0.1	7.7 - 200 A - 68
69 - 0.1	7.7 - 200 A - 69
70 - 0.1	7.7 - 200 A - 70
71 - 0.1	7.7 - 200 A - 71
72 - 0.1	7.7 - 200 A - 72
73 - 0.1	7.7 - 200 A - 73
74 - 0.1	7.7 - 200 A - 74
75 - 0.1	7.7 - 200 A - 75
76 - 0.1	7.7 - 200 A - 76
77 - 0.1	7.7 - 200 A - 77
78 - 0.1	7.7 - 200 A - 78
79 - 0.1	7.7 - 200 A - 79
80 - 0.1	7.7 - 200 A - 80
81 - 0.1	7.7 - 200 A - 81
82 - 0.1	7.7 - 200 A - 82
83 - 0.1	7.7 - 200 A - 83
84 - 0.1	7.7 - 200 A - 84
85 - 0.1	7.7 - 200 A - 85
86 - 0.1	7.7 - 200 A - 86
87 - 0.1	7.7 - 200 A - 87
88 - 0.1	7.7 - 200 A - 88
89 - 0.1	7.7 - 200 A - 89
90 - 0.1	7.7 - 200 A - 90
91 - 0.1	7.7 - 200 A - 91
92 - 0.1	7.7 - 200 A - 92
93 - 0.1	7.7 - 200 A - 93
94 - 0.1	7.7 - 200 A - 94
95 - 0.1	7.7 - 200 A - 95
96 - 0.1	7.7 - 200 A - 96
97 - 0.1	7.7 - 200 A - 97
98 - 0.1	7.7 - 200 A - 98
99 - 0.1	7.7 - 200 A - 99
100 - 0.1	7.7 - 200 A - 100

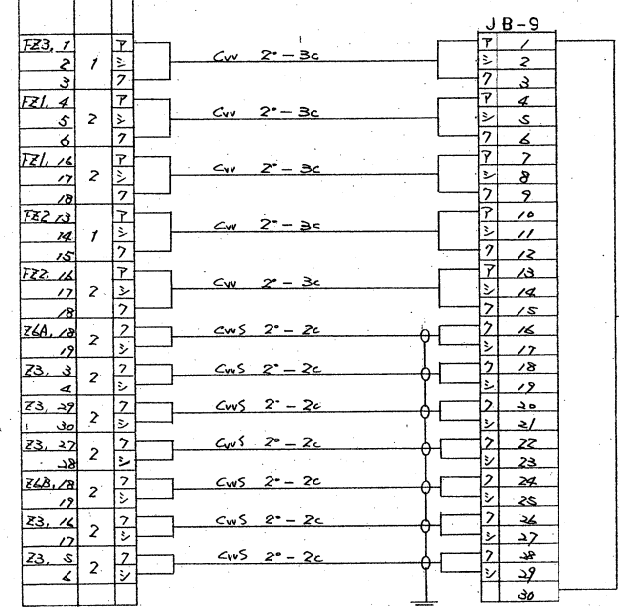
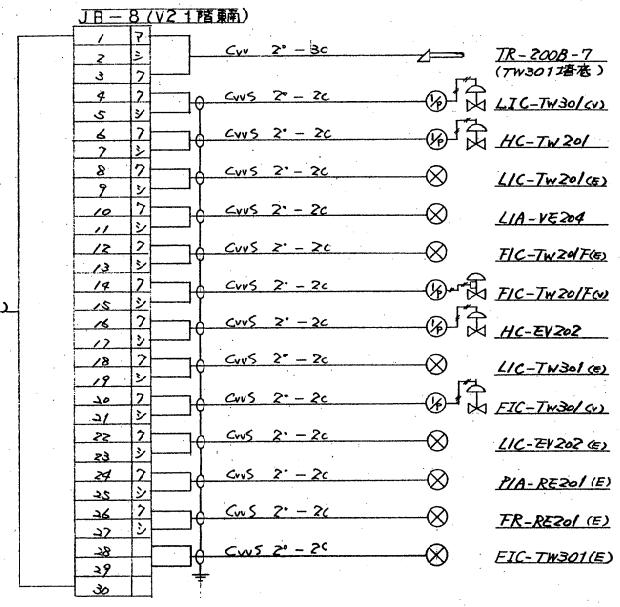
(9-1)	
$CyR: 2^{\circ} = 3^{\circ}$	$7A: 2^{\circ} = 3^{\circ}$
$CyR: 2^{\circ} = 2^{\circ}$	$5A: 2^{\circ} = 2^{\circ}$
$2^{\circ} = 2^{\circ}$	$2^{\circ} = 2^{\circ}$
(9-2)	
$2^{\circ} = 2^{\circ}$	$7A: 2^{\circ} = 2^{\circ}$
$2^{\circ} = 2^{\circ}$	$5A: 2^{\circ} = 2^{\circ}$
$2^{\circ} = 2^{\circ}$	$2^{\circ} = 2^{\circ}$
(9-3)	
$CyR: 2^{\circ} = 2^{\circ}$	$7A: 2^{\circ} = 2^{\circ}$
$2^{\circ} = 2^{\circ}$	$5A: 2^{\circ} = 2^{\circ}$



CWS 2"-30c (68m)



CWS 2"-30c (65m)



CWS 2"-30c (65m)

